

SUNRAY INDEPENDENT SCHOOL DISTRICT

A Great Place to Learn

PO Box 240
400 East 7th Street
Sunray, TX 79086-0240

Phone: (806) 948-4411
FAX: (806) 948-5274
Glen Waldo, Superintendent

December 12, 2013

Dear Sunray Community and Visiting Schools:

I am very excited about our new gymnasium and hope you enjoy playing and watching games in our new facilities. However, our Phase 2 is still underway and we have had some parking issues. With the tight parking lot on the southeast side of the gym, we have had buses and cars blocked in and unable to exit the parking lot. We have also had cars damaged by other cars while backing due to blocked exits.

I am writing to request that buses park on the West side of the gyms on/near Bobcat Road (*alley between Avenue Q and Avenue O*). Bobcat Road connects 9th Street and 10th Street and is located behind the visiting football bleachers and the high school campus. There are three designated parking areas for visiting team buses during game nights. Buses may parallel park on Bobcat Road next to the pipe fence on pavement. If buses will enter from 10th Street headed north, then passenger unloading will be off the alley/street and into the courtyard behind the Ag Shop and High School campus. They may also park between Bobcat Road and the chain link fence of the visitor's football bleachers. The third area is the dirt parking lot south of the Ag Shop and west of the practice football field. Many of our students participating in basketball park in this area. Both of those parking areas are dirt. The team/players will enter the gymnasium between the old varsity gym and metal weight barn just like last year.

Fans and parents may park in the area southwest of the new gym. Once it is full, they may park in these other areas that will require additional walking around the metal weight barn. The other parking areas include:

1. along the visitor fence of the football stadium,
2. along the fence of the practice football field,
3. in the dirt parking area south of the Ag Shop toward 10th Street, or
4. parallel along the pipe fence on Bobcat Road (outside the bus parking only zone) near 9th Street.

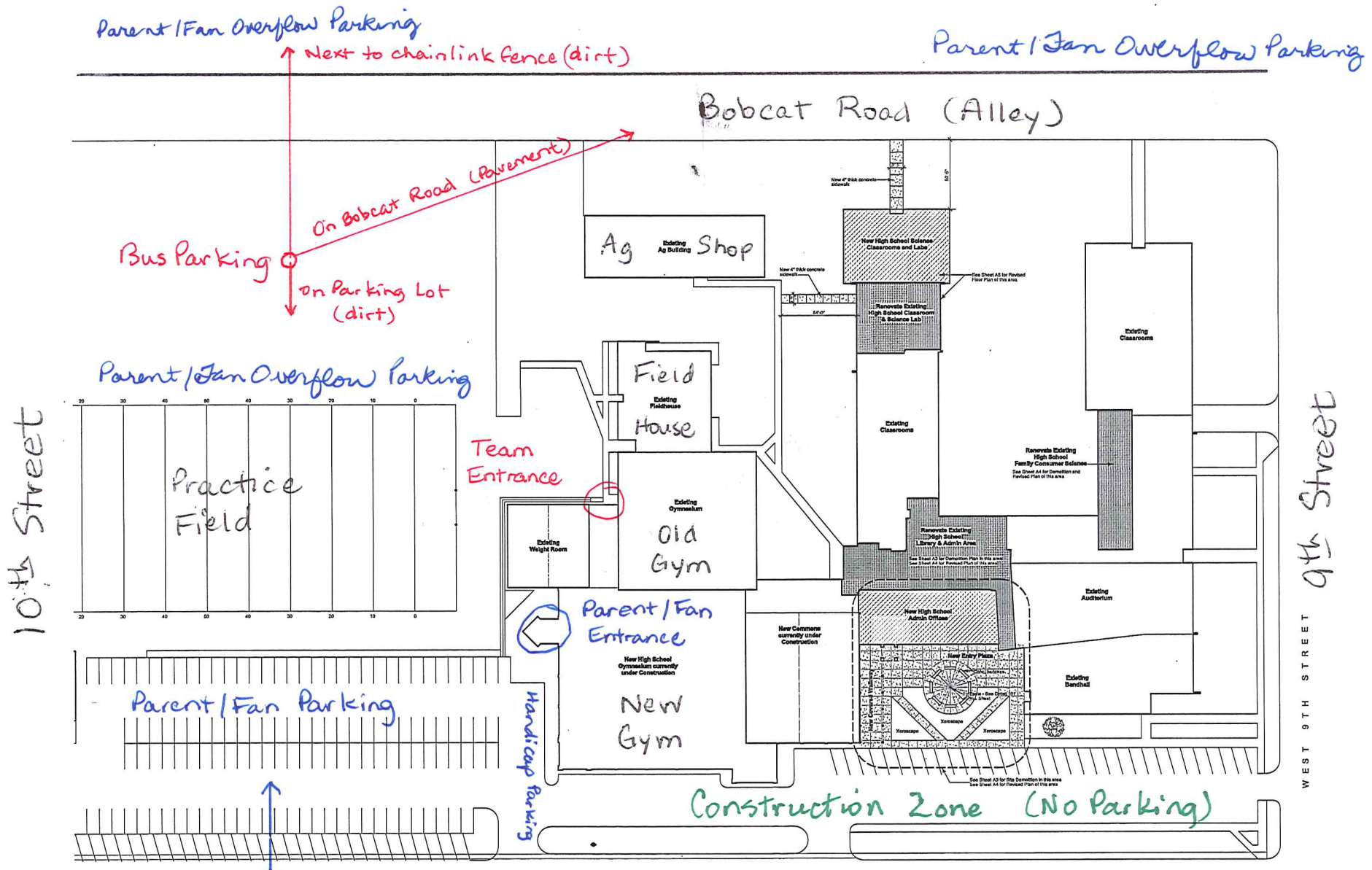
I have included a map with designated parking areas for buses and fan/parent automobiles. There are a few handicap parking spots on the sidewalk on the south side of the new gym. It will be extremely important that parking follow these designations and not block traffic flow areas or Bobcat Road (*with four basketball games, cars with fans/parents and buses with players could be arriving and departing throughout the game night*).

Please also note the entrance door in the weight room for the team and the entrance into the new gym for parents/fans. I continue to ask for your patience, cooperation, and attention to parking instructions during this final construction phase. I want to keep traffic flowing and not have buses and cars blocked and unable to exit parking lots.

Sincerely,

Glen Waldo

Football Stadium (Visitors)



Parking diagram is very deceptive. Not as many spaces as diagrammed. Parking lot is not marked / striped and cars have blocked buses and other cars by not leaving space for cars to exit parking lot.

Avenue Q

High School Site Plan
Scale: 1" = 30'



AVENUE Q